

# Discontinuation of COVID Precautions for Inpatient And Outpatients (Clinical Clearance)

Confirmed or Presumed Positive COVID patients will retain a COVID infection flag in the medical record for 20 days past the date of original result. Data indicates that patients with mild to moderate COVID-19 infection remain infectious no longer than 10 days after symptom onset. Recovered patients can continue shed detectable SARS-CoV-2 RNA in upper respiratory specimens for up to 3 months after illness onset. ([CDC – Duration of Isolation and Precautions for Adults w/COVID-19](#))

Discontinuation of transmission-based precautions in the inpatient and outpatient setting prior to 20 days from positive result or presumptive positive diagnosis must satisfy the specifications below.

If patient meets Clinical Clearance Guideline, please refer to the Clinical Clearance Order Tip Sheet for more information on removing COVID precautions.

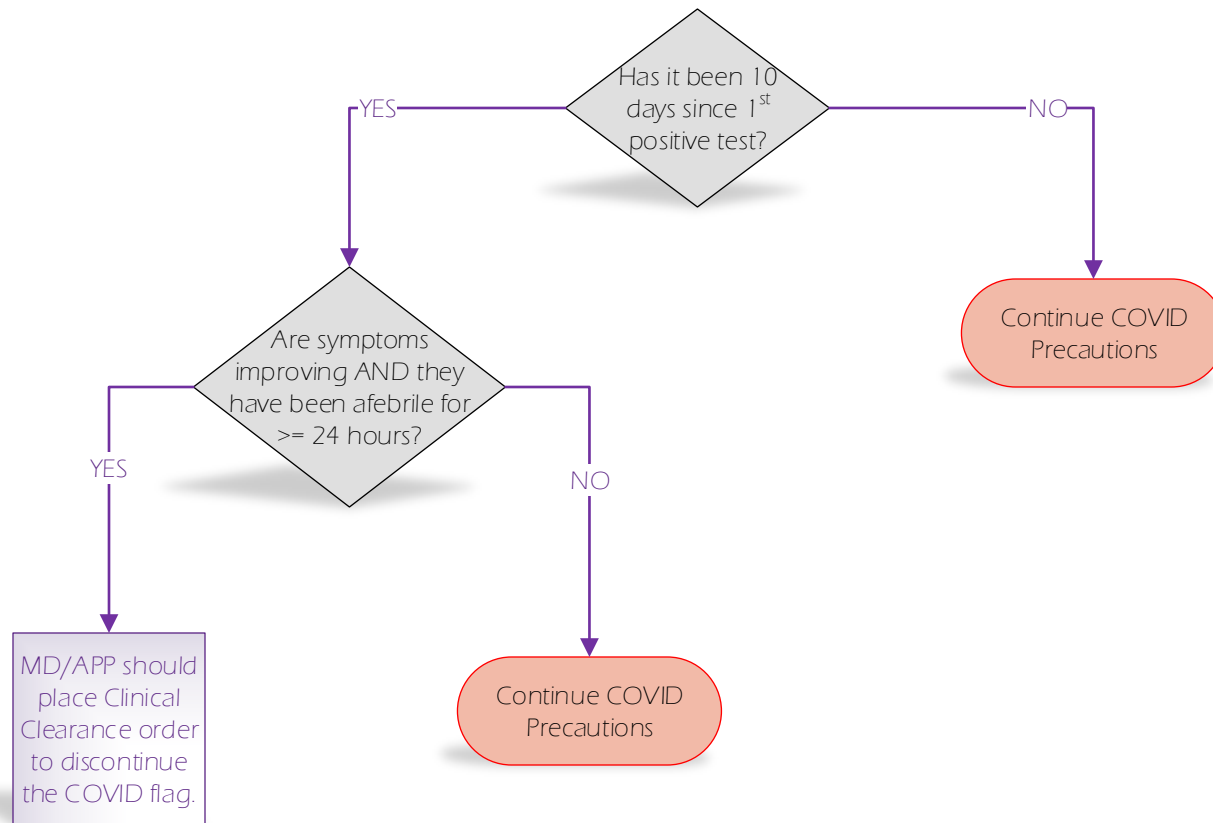
COVID Patient Category	Description	Clearance Strategy
Category A	<ul style="list-style-type: none"> <li>Asymptomatic</li> <li><b>Mild Illness:</b> Individuals who have any of the various signs and symptoms of COVID-19 (e.g., fever, cough, sore throat, malaise, headache, muscle pain) without shortness of breath, dyspnea, or abnormal chest imaging</li> <li><b>Moderate Illness without COVID Hospitalization:</b> Individuals who have evidence of lower respiratory disease by clinical assessment or imaging, and a saturation of oxygen (SpO2) ≥94% on room air at sea level</li> <li>No Artificial Airway</li> <li>No ECMO</li> <li>No Immunocompromised conditions</li> </ul>	<p><b>Symptom Based Strategy</b></p> <ul style="list-style-type: none"> <li>Cleared after 10 days since 1<sup>st</sup> positive test* by MD/ APP placing the Clinical Clearance order</li> <li>24 hours afebrile without use of antipyretics</li> <li>Improvement of symptoms</li> </ul>
Category B	<ul style="list-style-type: none"> <li><b>Moderate Illness with COVID Hospitalization:</b> Individuals who have evidence of lower respiratory disease by clinical assessment or imaging, and a saturation of oxygen (SpO2) ≥94% on room air at sea level</li> <li><b>Critical Illness:</b> Persons who have respiratory frequency &gt;30 breaths per minute, SpO2 &lt;94% on room air (or, for patients with chronic hypoxemia, a decrease from baseline of &gt;3%), ratio of arterial partial pressure of oxygen to fraction of inspired oxygen (PaO2/FiO2) &lt;300 mmHg, or lung infiltrates &gt;50% OR persons with respiratory failure, Septic shock, and/or multiple organ dysfunction</li> <li>No Artificial Airway</li> <li>No ECMO</li> <li>No Immunocompromised conditions</li> </ul>	<p><b>No Advanced Clearance Strategy</b></p> <ul style="list-style-type: none"> <li>Cleared at 20 days after 1<sup>st</sup> positive test*</li> <li>24 hours afebrile without use of antipyretics</li> <li>Improvement of symptoms</li> </ul>
Category C	<ul style="list-style-type: none"> <li><b>Immunocompromised:</b> Organ or stem cell transplant, active chemotherapy for cancer, untreated HIV infection with CD4 T lymphocyte count &lt; 200, combined primary immunodeficiency disorder, or receipt of prednisone &gt;20mg/day for more than 14 days <b>OR</b></li> <li>Has Tracheostomy OR Intubated OR Receiving ECMO</li> </ul>	<p><b>No Advanced Clearance Strategy</b></p> <ul style="list-style-type: none"> <li>After 20 days from 1<sup>st</sup> positive test, patient must meet the following criteria:             <ul style="list-style-type: none"> <li>24 hours afebrile without antipyretics</li> <li>Improvement of symptoms</li> <li>Patient must have two negative tests &gt; 24 hours apart for COVID flag removal                 <ul style="list-style-type: none"> <li>If patient is still intubated or on ECMO with NO trach, both tests must be BAL specimen type</li> <li>If patient has trach, one of the two tests must be a lower respiratory tract specimen (ET aspirate or BAL)</li> </ul> </li> </ul> </li> <li><b>For Biologic, non-Oncologic infusions</b> <ul style="list-style-type: none"> <li>20 days from symptom onset/positive test if asymptomatic PLUS 1 day fever free without antipyretics. Negative COVID test not required.</li> </ul> </li> </ul>

\*If a patient has recovered from COVID-19 infection, within the past 90 days and has been clinically cleared using the criteria above, they do not need to be re-tested prior to undergoing an aerosol-generating procedure unless they are exhibiting new symptoms or have been involved in a new COVID-19 exposure. If they are being admitted through the ED for any reason, have new symptoms or a new exposure, they must be re-tested, regardless of previous COVID-19 status.

If Category B or C at time of testing, the patient must be in COVID precautions for a minimum of 20 days; after 20 days, patient's *current state* should be used to determine which clearance strategy is most appropriate.

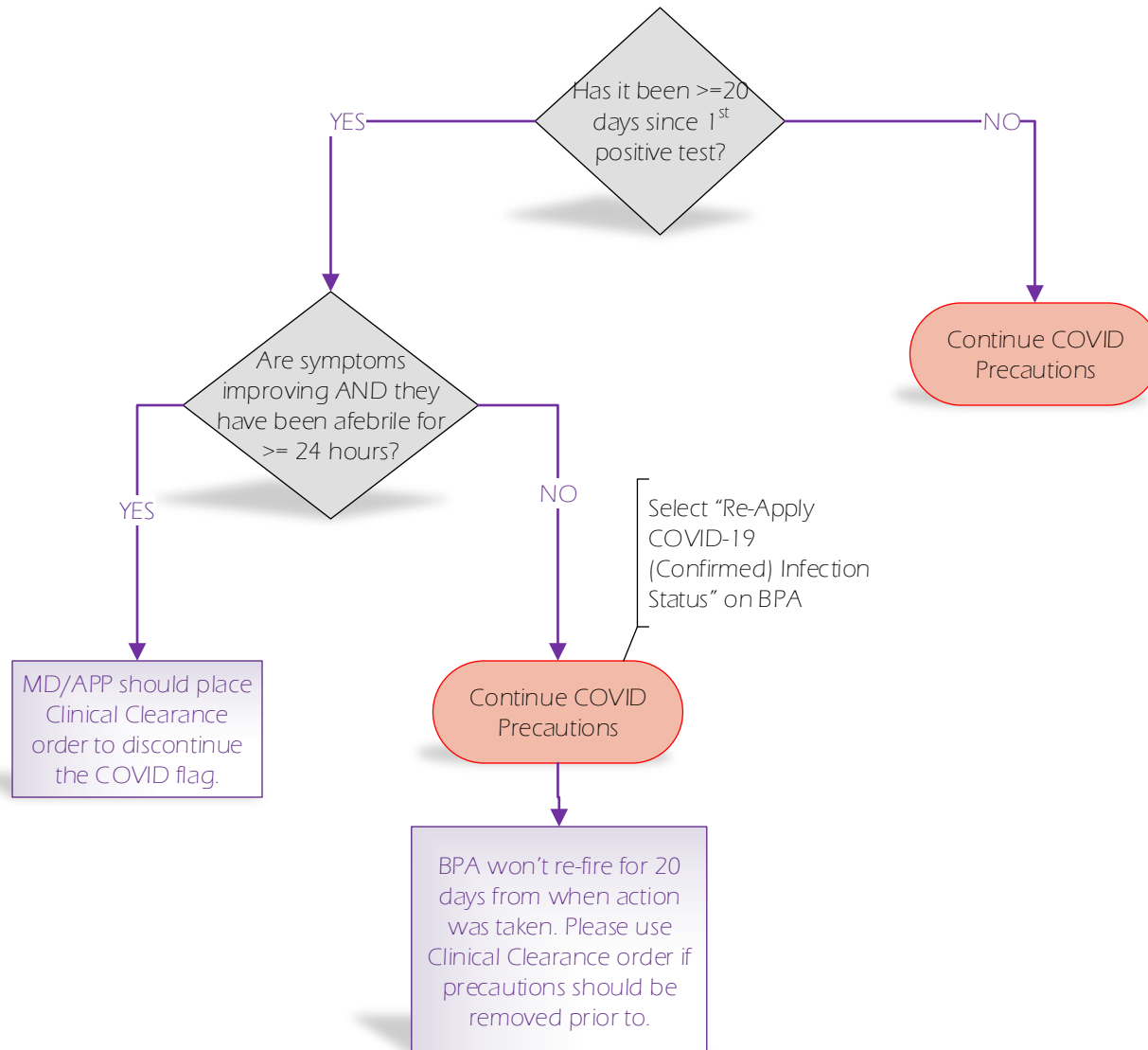
Patients who have a need for clearance, but do not meet the above criteria, can be discussed on a case-by-case basis with Infectious Disease.

# Discontinuation of COVID-19 Isolation Precautions – Category A



COVID Positive flag will fall off the patient's chart at 20-days, if no action taken.

# Discontinuation of COVID-19 Isolation Precautions – Category B



# Discontinuation of COVID-19 Isolation Precautions – Category C

