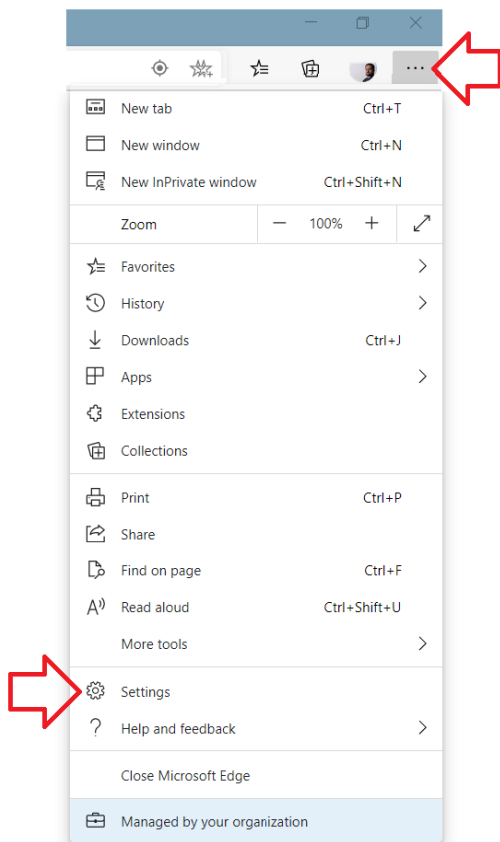


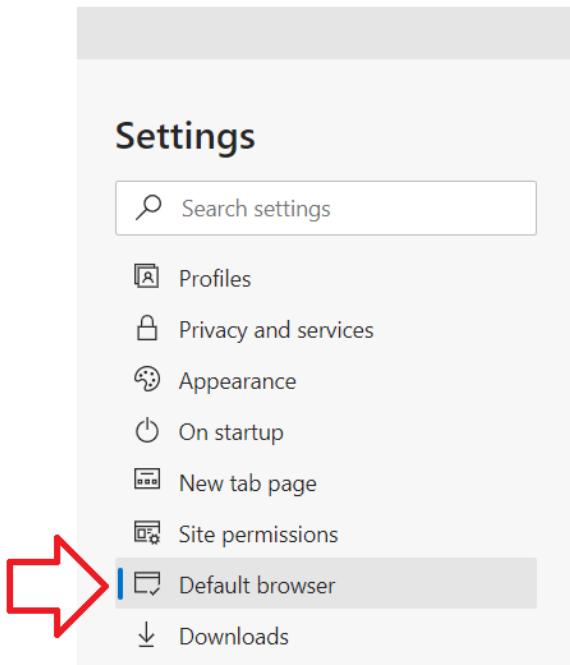
# Making Edge Your Default Internet Browser

Doximity requires Microsoft Edge or Chrome to run effectively. NM has now pushed Microsoft Edge to all NM devices. In order to make Microsoft Edge the default browser on your computer, please follow the steps below:

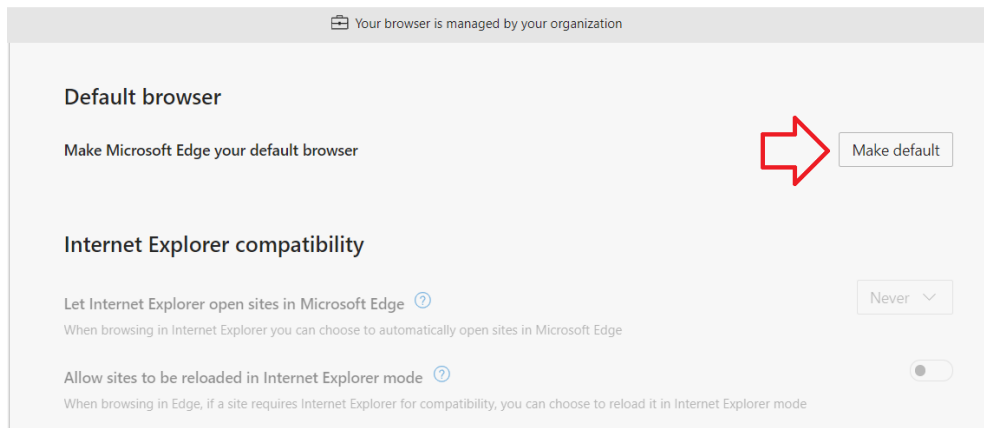
1. Open the Edge Browser.
2. At the top right-hand corner, click on the **Ellipsis** button (3 dots).
3. Click on **Settings**.



4. Click on **Default browser**.



5. Click on the **Make Default** button.



**If further assistance is required, please contact MyNM Service Center on NM Interactive.**