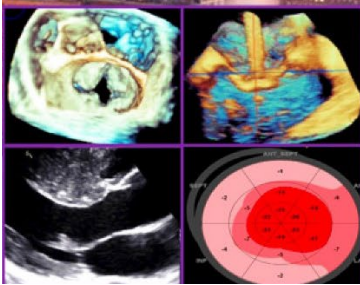


**46<sup>th</sup> Annual Echo Northwestern - Saturday October 26, 2024**  
**Heart Failure and Cardiomyopathy**



*2024 Conference Topics: heart failure, cardiomyopathies, pericardial disease, valvular heart disease, congenital valve disease, pulmonary hypertension and more.*

**Saturday, October 26, 2024**

**Northwestern Memorial Hospital  
Feinberg Pavilion Conference Center  
251 East Huron Street, 3<sup>rd</sup> Floor  
Chicago, Illinois**

Click here for [Details and Registration](#)  
**REGISTER EARLY TO AVOID MISSING OUT!**

Echo Northwestern is in its 46th year and is the longest-running echo course in the United States! The faculty comprises renowned physicians and sonographers from Northwestern Memorial Hospital and Lurie Children's. This year's course will focus on heart failure and cardiomyopathies.

**Sponsored by**

Northwestern University Feinberg School of Medicine Office of Continuing Medical Education, Bluhm Cardiovascular Institute at Northwestern Medicine, and Ann & Robert H. Lurie Children's Hospital of Chicago

By the end of the course, participants will have improved skills that can be immediately applied to everyday practice as well as an understanding of future applications.

**Learning Objectives**

1. Define the diagnostic criteria and imaging modalities for infiltrative and restrictive cardiomyopathies, including cardiac amyloidosis, hypertrophic cardiomyopathy, and pericardial diseases, to improve accurate diagnosis and patient management.
2. Describe the role of echocardiography and other cardiac imaging techniques in the assessment and management of acquired and congenital valvular heart diseases, including mitral and tricuspid valve pathologies, and explore the latest therapeutic options and interventions.
3. Identify the characteristics and imaging findings associated with right heart dysfunction and pulmonary hypertension to enhance diagnostic accuracy and treatment strategies.
4. Discuss the challenges and advancements in assessing diastolic dysfunction and explore evidence-based strategies for evaluation and management of patients with this condition in clinical practice.
5. Analyze the indications, techniques, and outcomes of left ventricular assist devices (LVADs) in patients with advanced heart failure to optimize post-implantation management.

## **Target Audience**

This continuing medical education program is designed to meet the educational needs of cardiologists, cardiology fellows, surgeons, sonographers, and nurses who have a need for echo expertise.

## **Accreditation Statement**

The Northwestern University Feinberg School of Medicine is accredited by the Accreditation Council for Continuing Medical Education (ACCME) to provide continuing medical education for physicians.

## **Credit Designation Statement**

The Northwestern University Feinberg School of Medicine designates this live activity for a maximum of 6.75 *AMA PRA Category 1 Credit(s)*<sup>™</sup>. Physicians should claim only the credit commensurate with the extent of their participation in the activity.

## **ABIM MOC Points**

Successful completion of this CME activity, which includes participation in the evaluation component, enables the participant to earn up to 6.75 MOC points in the American Board of Internal Medicine's (ABIM) Maintenance of Certification (MOC) program. It is the CME activity provider's responsibility to submit participant completion information to ACCME for the purpose of granting ABIM MOC credit.

## **Conference Location**

Northwestern Memorial Hospital  
Feinberg Pavilion Conference Center  
251 East Huron Street, 3<sup>rd</sup> Floor  
Chicago, IL 60611

For details and registration please visit: [Echo Northwestern](#)

Once registration capacity has filled, registration will be closed, and no on-site registration will be allowed.

**REGISTER EARLY TO AVOID MISSING OUT!**

