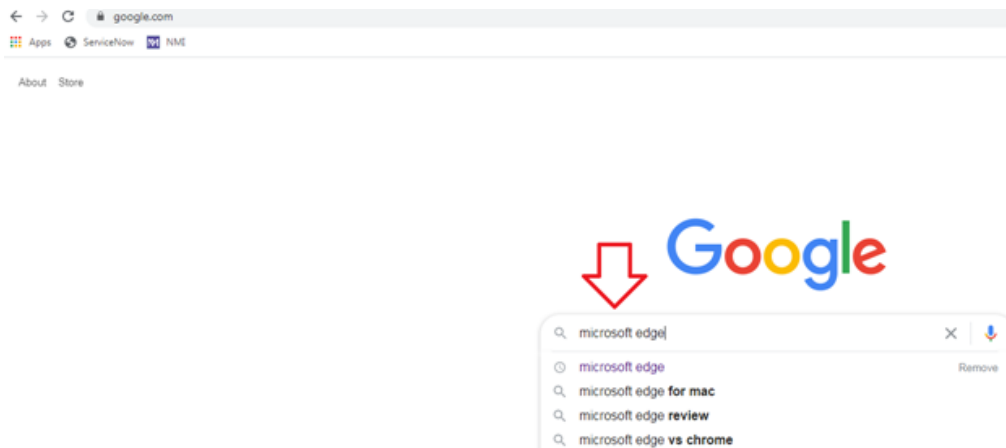


# Installing Microsoft Edge On Non-NM Computers

Microsoft Edge is the newest Internet browser from Microsoft that improves compatibility & performance and security & privacy.

**1.** In order to download and install Microsoft Edge on your personal computer, please open an Internet browser (e.g. Chrome, Internet Explorer, Safari, etc.) and search for Microsoft Edge on Google or another search engine. You can also navigate directly to [Microsoft Edge](#)



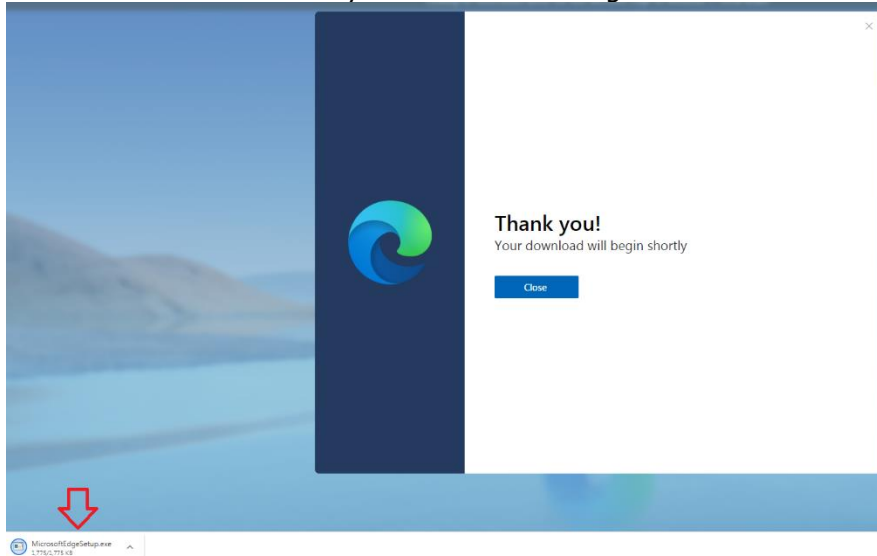
**2.** Once you have arrived at the download page click "Download."

Note: It will read, "Download for" followed by the appropriate operating system. Windows 7 is picture but yours could be different.

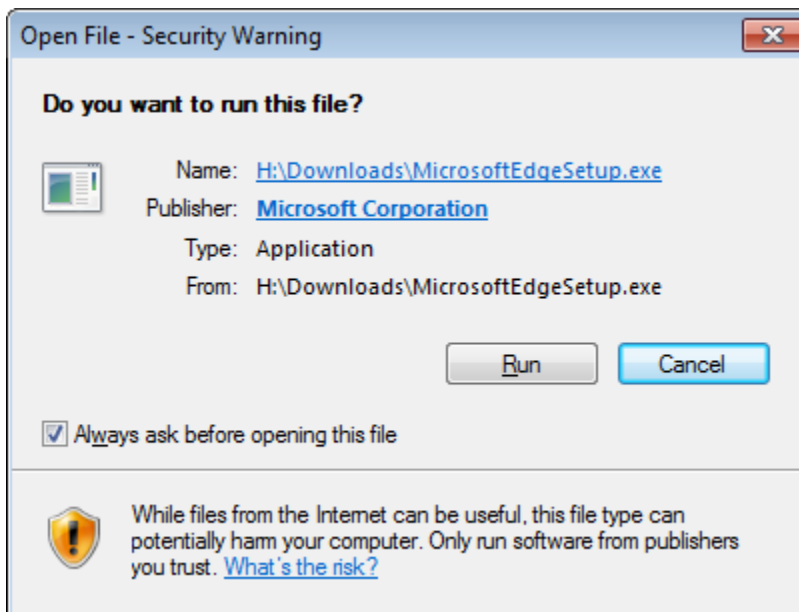


3. Click "Accept and download" on the license agreement page.

4. Depending on which browser you're using, you may need to click the set up file in the lower left hand corner of your screen to begin installation

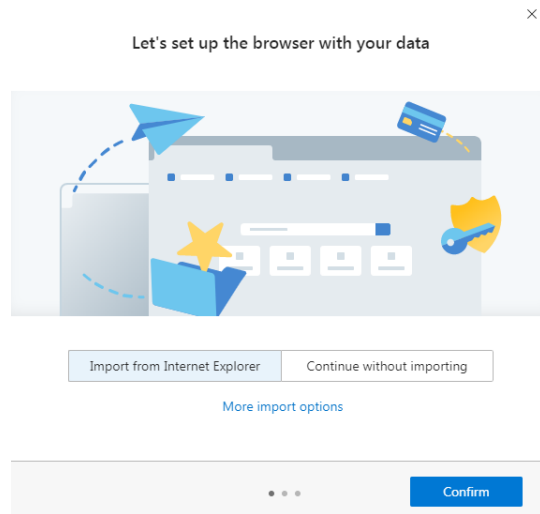


5. If you receive a security box asking if you want to run the installation click "Run"

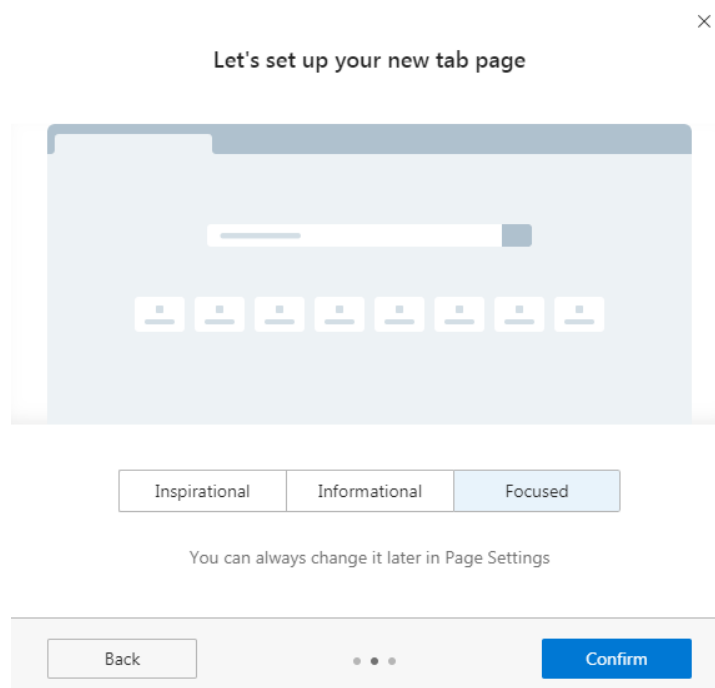


**6.** The install will be automatic. Once it has ended it will ask if you want to import your favorites from another browser. Click "Confirm" if you wish to do this.

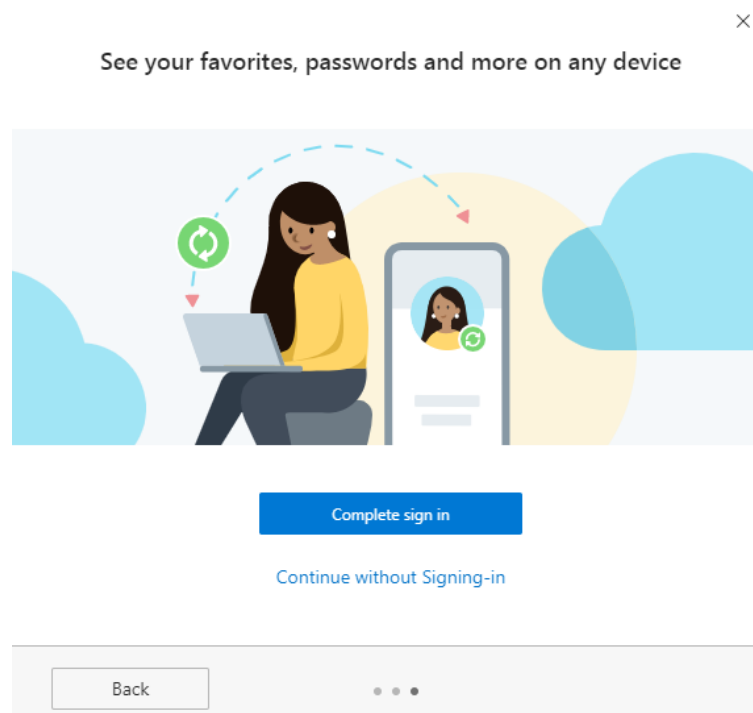
Note: There may be multiple browsers listed from which to import favorites.



**7.** Choose which homepage appearance you prefer and click "Confirm." Clicking on the different options will allow you a preview before selecting.



8. You will be asked if you wish to continue with or without signing in. Click "continue without Signing-in." This can be done later should you choose.



9. This concludes the installation process.

See [Doximity – Make Edge Your Default Browser](#) tipsheet for steps to default your computer browser to Edge.