



## Your New NM Device Is Ready: Setting Up Your Printer






Please continue reading to ensure you can find your applications, files and are able to print. If you have any questions or need support, please call **1-815-759-4357** to reach the Service Desk

### Use Printer Logic To Print

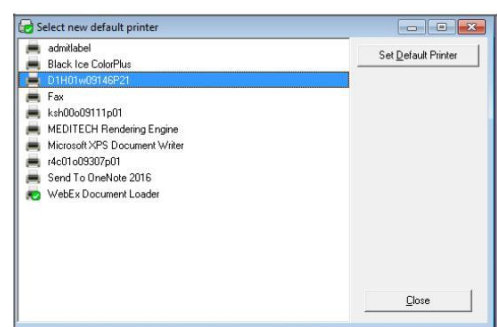
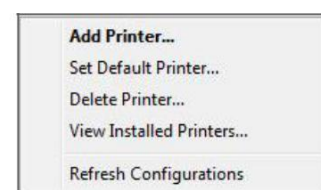
Printer Logic is the tool used to set your default printer or add new printers for printing from Window applications such as Word or PowerPoint. This tool is used primarily by non-patient care roles to add printers. It is not used to manage printing from Epic or Cerner.

***The 7-digit printer name is needed to add new printers and can be found on the black labels on each printer. Contact the Help Desk if you cannot find your printer name.***

#### Assign Default Printer


1. Confirm the name of your desired printer using the black label on the desired printer.
2. **Right-click** the  (printer icon) in the lower right of your screen. A menu appears.
3. Click **Set Default Printer** from the menu above. The Select new default printer window appears.
4. Highlight the desired printer name in the list.
5. Click .
6. Click .

This printer will be used as the default when you print from this device.



### Set Up Additional Printers Using Print Installer

1. Find the name of your desired printer using the “name” on the black label on the desired printer.

2. Click  in the lower left corner.

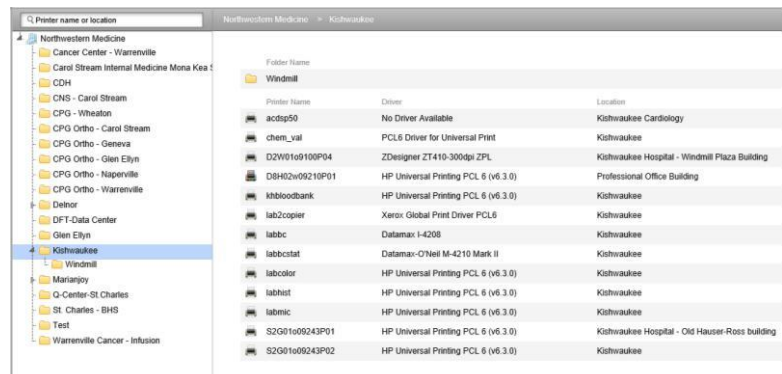
3. Click **All Programs**.

4. Click **Print Installer**.

5. Select **Add Printer**.

An Internet Explorer window appears with a list of NM locations.

6. Select (Insert Hospital name) from the list of printer locations *on the left*.



Printer Name	Driver	Location
acdp50	No Driver Available	Kishwaukee Cardiology
chem_val	PCL6 Driver for Universal Print	Kishwaukee
D2W01o9100P04	ZDesigner ZT410-300dpi ZPL	Kishwaukee Hospital - Windmill Plaza Building
D8H02w09210P01	HP Universal Printing PCL 6 (v6.3.0)	Professional Office Building
khlbloodbank	HP Universal Printing PCL 6 (v6.3.0)	Kishwaukee
lab2copier	Xerox Global Print Driver PCL6	Kishwaukee
labbc	Datamax i-4208	Kishwaukee
labbcstat	Datamax-ONeil M-4210 Mark II	Kishwaukee
labcolor	HP Universal Printing PCL 6 (v6.3.0)	Kishwaukee
labhist	HP Universal Printing PCL 6 (v6.3.0)	Kishwaukee
labmic	HP Universal Printing PCL 6 (v6.3.0)	Kishwaukee
S2G01o09243P01	HP Universal Printing PCL 6 (v6.3.0)	Kishwaukee Hospital - Old Hauser-Ross building
S2G01o09243P02	HP Universal Printing PCL 6 (v6.3.0)	Kishwaukee

7. Select the desired printer from the list that appears *on the right*. The printer will appear in your Print drop list.