



Your New NM Device Is Ready: Favorites On Internet Explorer



Please continue reading to ensure you can find your applications, files and are able to print. If you have any questions or need support, please call **1-815-759-4357** to reach the Service Desk

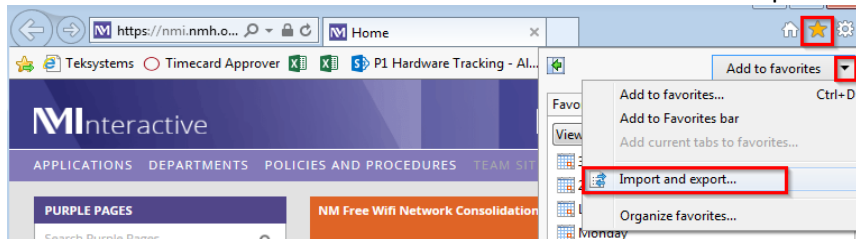
Export and Import Favorites from Internet Explorer

Internet Explorer

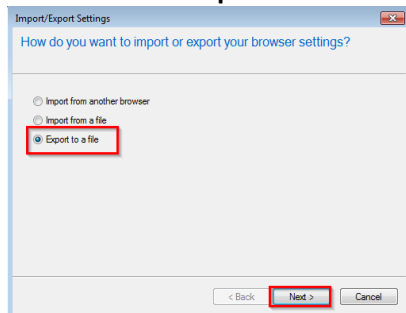
Internet Explorer will be accessible from the Start Menu. When you open Internet Explorer, your home page will be NMI: **Steps: Start Menu → All Programs → Internet Explorer**

Export Favorites from Internet Explorer

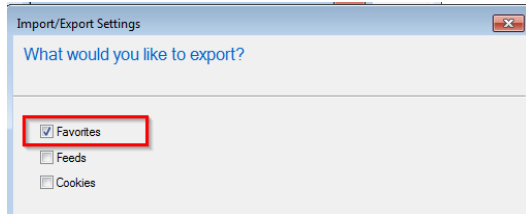
1. Open Internet Explorer: **Steps: Start Menu → All Programs → Internet Explorer**
2. Click on the **Star** icon in the upper right corner
3. Click the **down arrow** next to “**Add to Favorites**” and click on Import and Export



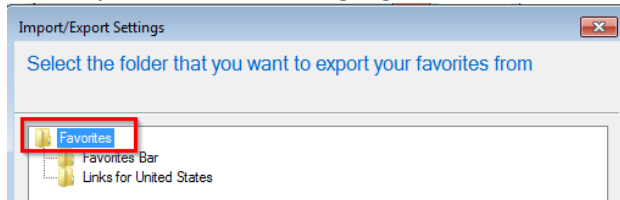
4. You are presented with the **How do you want to import or export your browser settings?** Window. Click **Export to a file** and Click **Next**



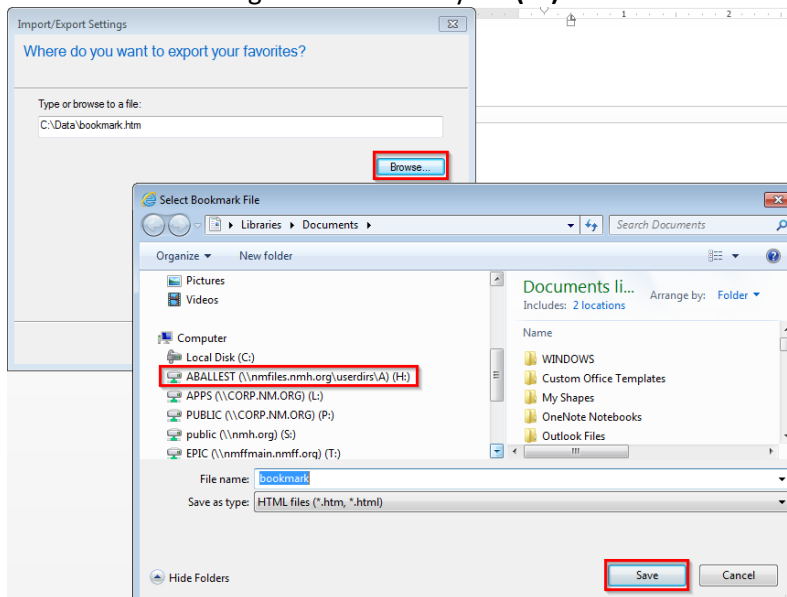
5. Click **Favorites** and Click **Next**



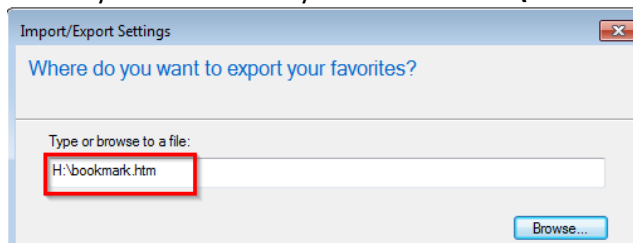
6. Ensure your '**Favorites**' is highlighted and Click **Next**



7. Click **Browse** → Navigate and click on your **(H:)** → Click **Save**

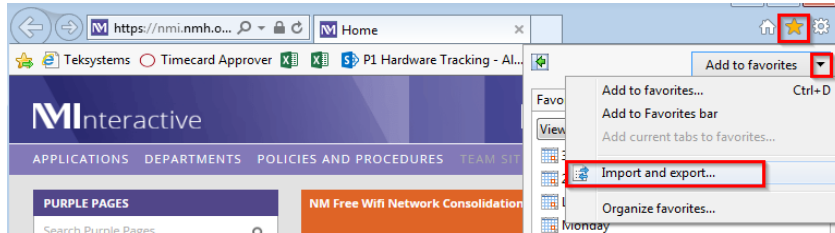


8. Ensure your Path shows your H drive → **H:** and click **Export**

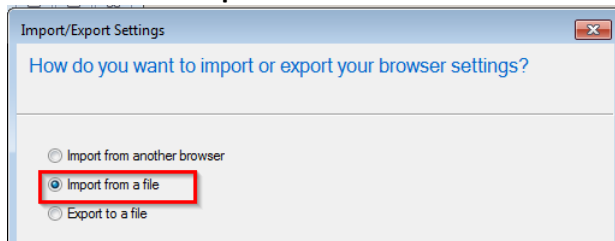


Import Favorites

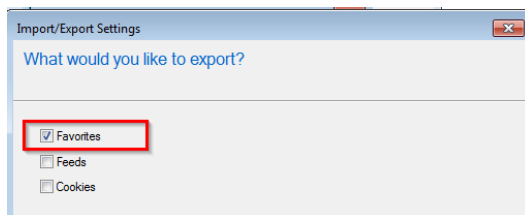
1. Click on the **Star** icon in the upper right corner
2. Click the **down arrow** next to “Add to Favorites” and click on Import and Export



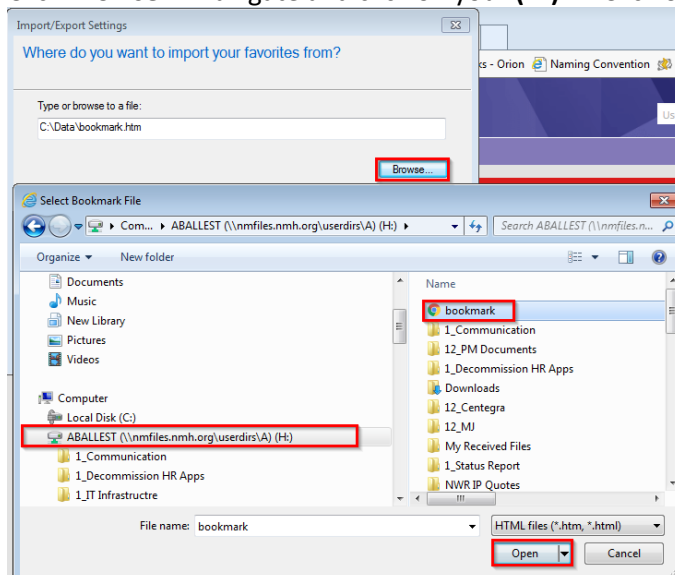
3. You are presented with the **How do you want to import or export your browser settings?** Window. Click **Import to a file** and Click **Next**



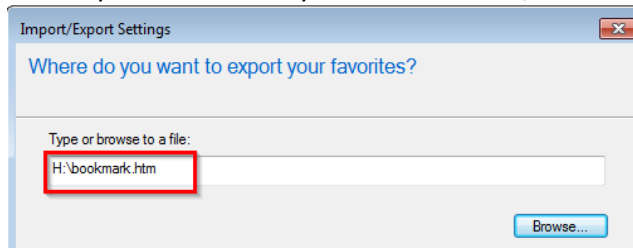
4. Click **Favorites** and Click **Next**



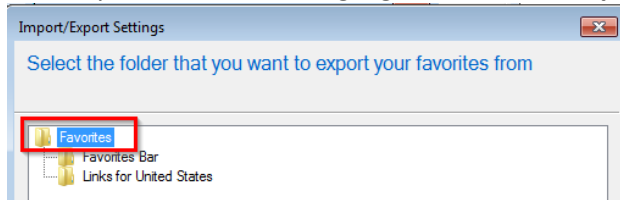
5. Click **Browse** → Navigate and click on your **(H:)** → Click on your saved favorites and click **Open**



6. Ensure your Path shows your H drive → **H:** and click **Next**



7. Ensure your '**Favorites**' is highlighted and Click **Import** and Click **Next**



8. You will get a Successfully Imported Window and click **Finish**

