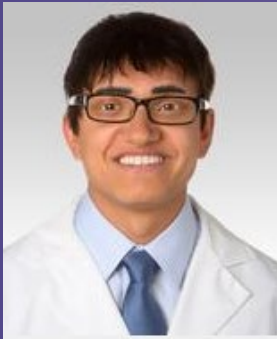


Physician and Healthcare Team CME Webcast

Noninvasive Evaluation of Coronary Artery Disease

Presented by:



Chintan Desai, MD

Cardiologist, Northwestern Medical Group
Clinical Assistant Professor
Northwestern University Feinberg School of Medicine

Purpose: This webinar provides educational updates on medications, vaccines, clinical guidelines and therapeutics for physicians and clinicians.

To Join the Event: RSVP or join the event by clicking the Microsoft Teams link sent to you via email. If you need assistance, please contact Michele Monzon-Kenneke at michele.monzon-kenneke@nm.org.

CME credit will be available for this event.

Learning Objectives

At the end of this activity, the participant will be able to:

1. Interpret coronary calcium scans
2. Apply knowledge of coronary CT angiography: patient selection and test interpretation
3. Assess and choose the appropriate testing modality in patients with chest pain

Accreditation Statement

The Northwestern University Feinberg School of Medicine is accredited by the Accreditation Council for Continuing Medical Education (ACCME) to provide continuing medical education for physicians.

Credit Designation Statement

Northwestern University Feinberg School of Medicine designates this live activity for a maximum of *1.0 AMA PRA Category 1 Credit™*. Physicians should claim only the credit commensurate with the extent of their participation in the activity.

7:00 – 8:00 am
Friday, November 15

[Join the meeting now](#)

+1 872-240-1267
Conference ID:
532 237 491#

Target audience:

Physicians and other healthcare professionals

Contact:

Michele Monzon-Kenneke at michele.monzon-kenneke@nm.org

Presenter(s) Disclosure Information:

Chintan Desai, MD, has no relevant financial relationships with ineligible companies to disclose.

FSM's CME leadership, review committee and staff have no relevant financial relationships with ineligible companies to disclose.