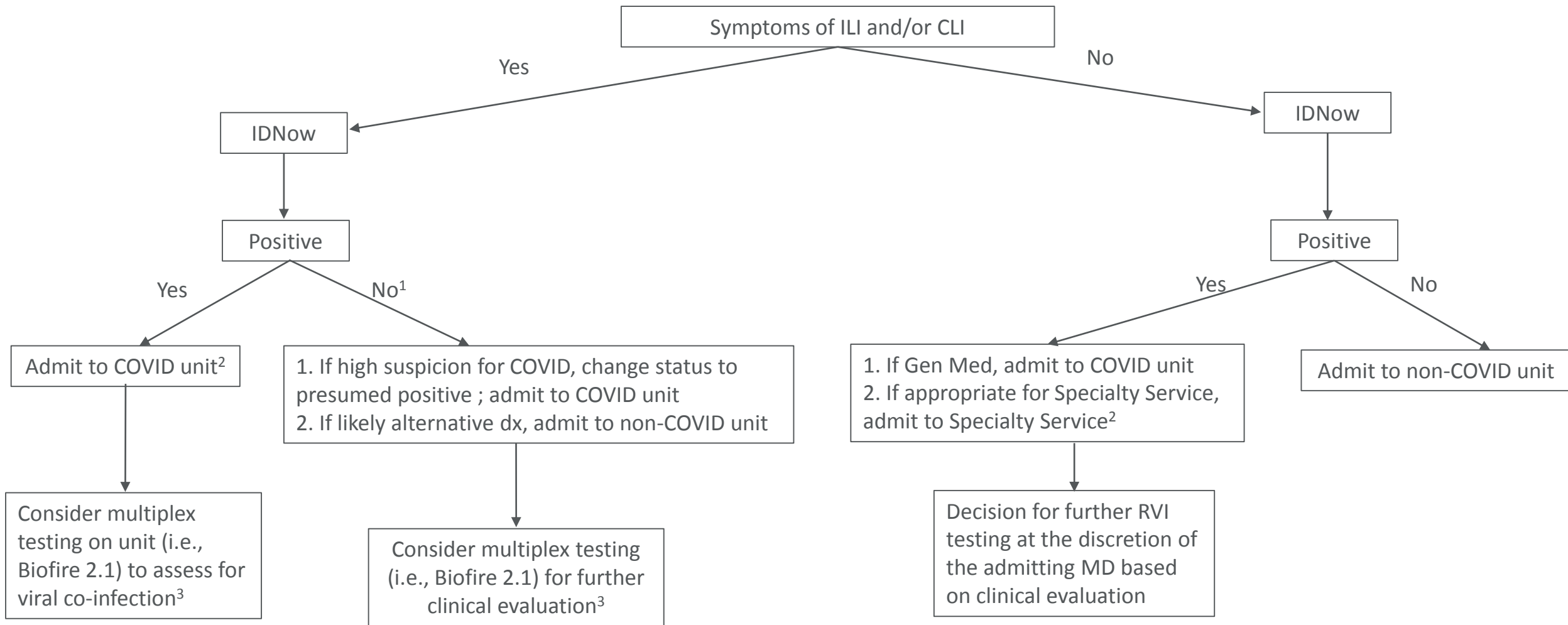


# Lab Update: Decision Algorithm for Respiratory Virus Infection (RVI) Testing for ED Admissions



<sup>1</sup>Maintain RVI isolation precautions in these symptomatic patients until RVI ruled out (mask and eye protection for everyone; “covid precautions” for all AGPs)

<sup>2</sup> The final admission unit is always at the discretion of the ED attending MD

<sup>3</sup>Do not delay empiric oseltamivir pending test results in patients suspected of having influenza